

# LARC

---

LANDSCAPE ARCHITECTURE

---

[www.larc.la](http://www.larc.la)

---

CONCEPT DESIGN

---

Project: ANIMAL REHOMING FACILITY - 92-102 Lundberg Dr, South Murwillumbah NSW ●

---

REVISION (E) - 16.09.22

---

- Concept Design

---

- Master Plan

---

- Plant Palette

---

- Materials Palette

---





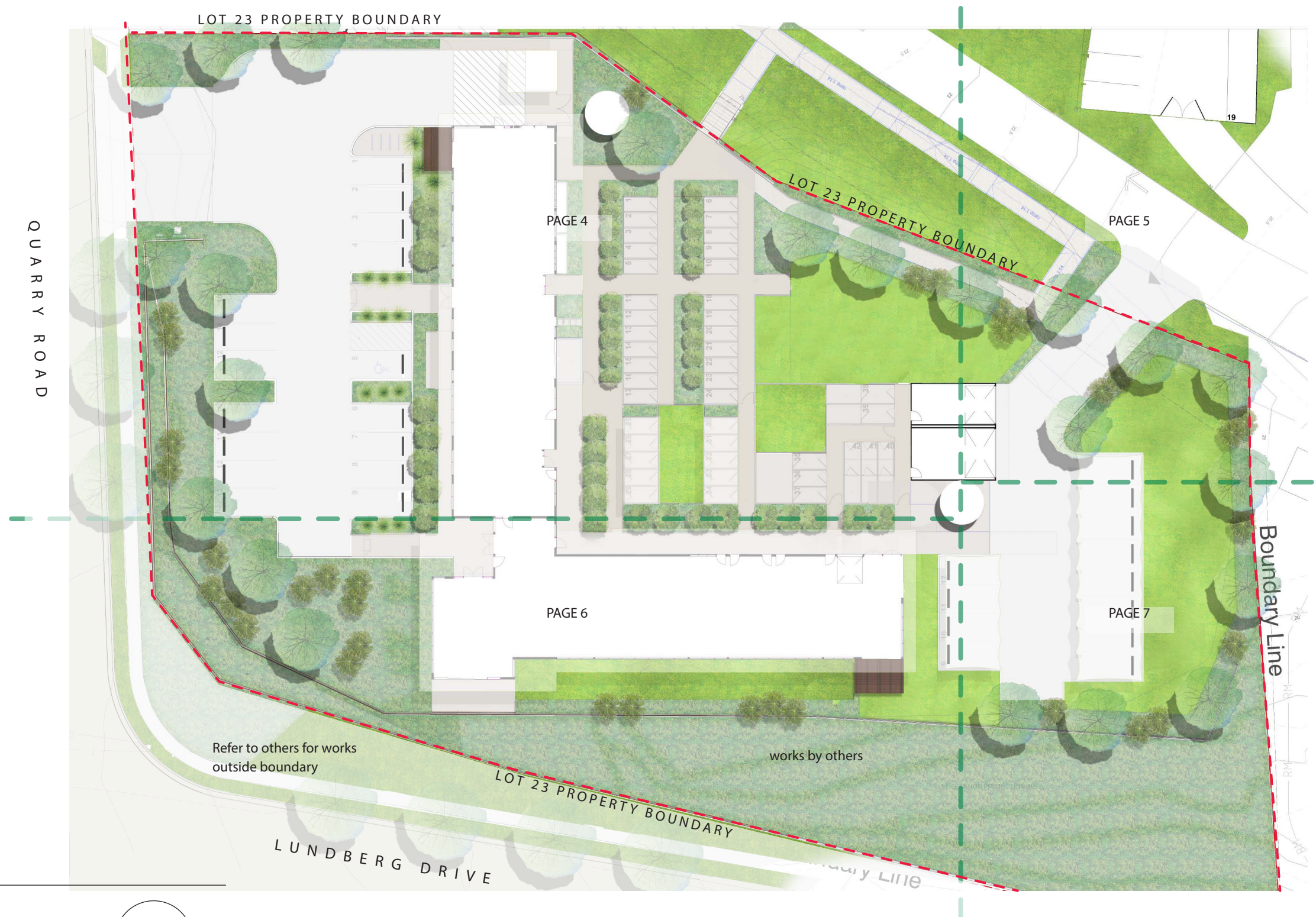
- LEGEND
- 1. Dogs & cats exercise yards
  - 2. Livestock / cattle holding pens
  - 3. Viewing & bonding shelter
  - 4. Vehicular access
  - 5. Existing landscape
  - 6. Vehicle impound

MASTER PLAN  
SCALE 1:1000 @ A3

North arrow pointing towards the top right.

REFER TO BKA  
DWG A400





SITE PLAN  
SCALE 1:250 @ A3

CONCEPT DESIGN	REVISION E	© LARC Landscape Architecture
Project: ANIMAL REHOMING FACILITY - South Murwillumbah		Date: 16/09/2022
Ref No.: 21561		Page: 3 / 12

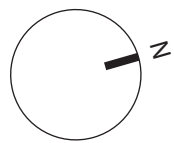




#### LEGEND

1. Feature trees (planted as tubestock unless otherwise specified)
2. Bitumen carpark
3. Timber deck
4. Concrete pavement
5. Lawn (grass seeded)
6. Screen planting
7. Water storage
10. Grass swale (by Engineer)
11. Bike racks
12. Ramped access
13. Grass seeded embankment
14. Buffer planting
15. Shade trees

LANDSCAPE PLAN - GROUND FLOOR  
SCALE 1:200 @ A3



CONCEPT DESIGN

REVISION E

© LARC Landscape Architecture

Project: ANIMAL REHOMING FACILITY - South Murwillumbah

Date: 16/09/2022

Ref No.: 21561

Page: 4 / 12



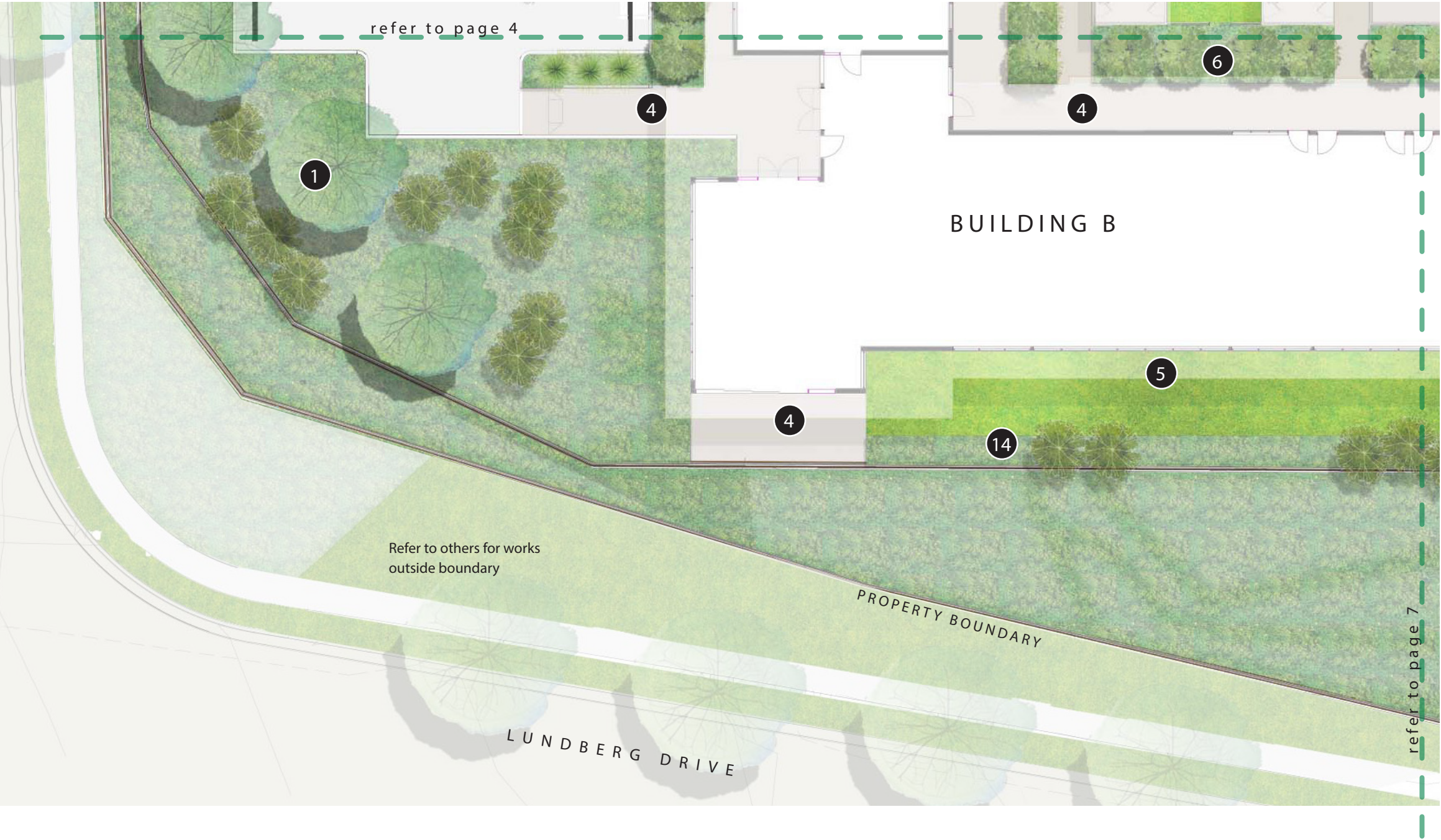


- LEGEND
- 1. Feature trees (planted as tubestock unless otherwise specified)
  - 2. Bitumen carpark
  - 3. Timber deck
  - 4. Concrete pavement
  - 5. Lawn (grass seeded)
  - 6. Screen planting
  - 7. Water storage
  - 10. Grass swale (by Engineer)
  - 11. Bike racks
  - 12. Ramped access
  - 13. Grass seeded embankment
  - 14. Buffer planting
  - 15. Shade trees

LANDSCAPE PLAN - GROUND FLOOR  
SCALE 1:200 @ A3

CONCEPT DESIGN	REVISION E	© LARC Landscape Architecture
Project: ANIMAL REHOMING FACILITY - South Murwillumbah		Date: 16/09/2022
Ref No.: 21561		Page: 5 / 12





- LEGEND
- 1. Feature trees (planted as tubestock unless otherwise specified)
  - 2. Bitumen carpark
  - 3. Timber deck
  - 4. Concrete pavement
  - 5. Lawn (grass seeded)
  - 6. Screen planting
  - 7. Water storage
  - 10. Grass swale (by Engineer)
  - 11. Bike racks
  - 12. Ramped access
  - 13. Grass seeded embankment
  - 14. Buffer planting
  - 15. Shade trees

LANDSCAPE PLAN - GROUND FLOOR  
SCALE 1:200 @ A3



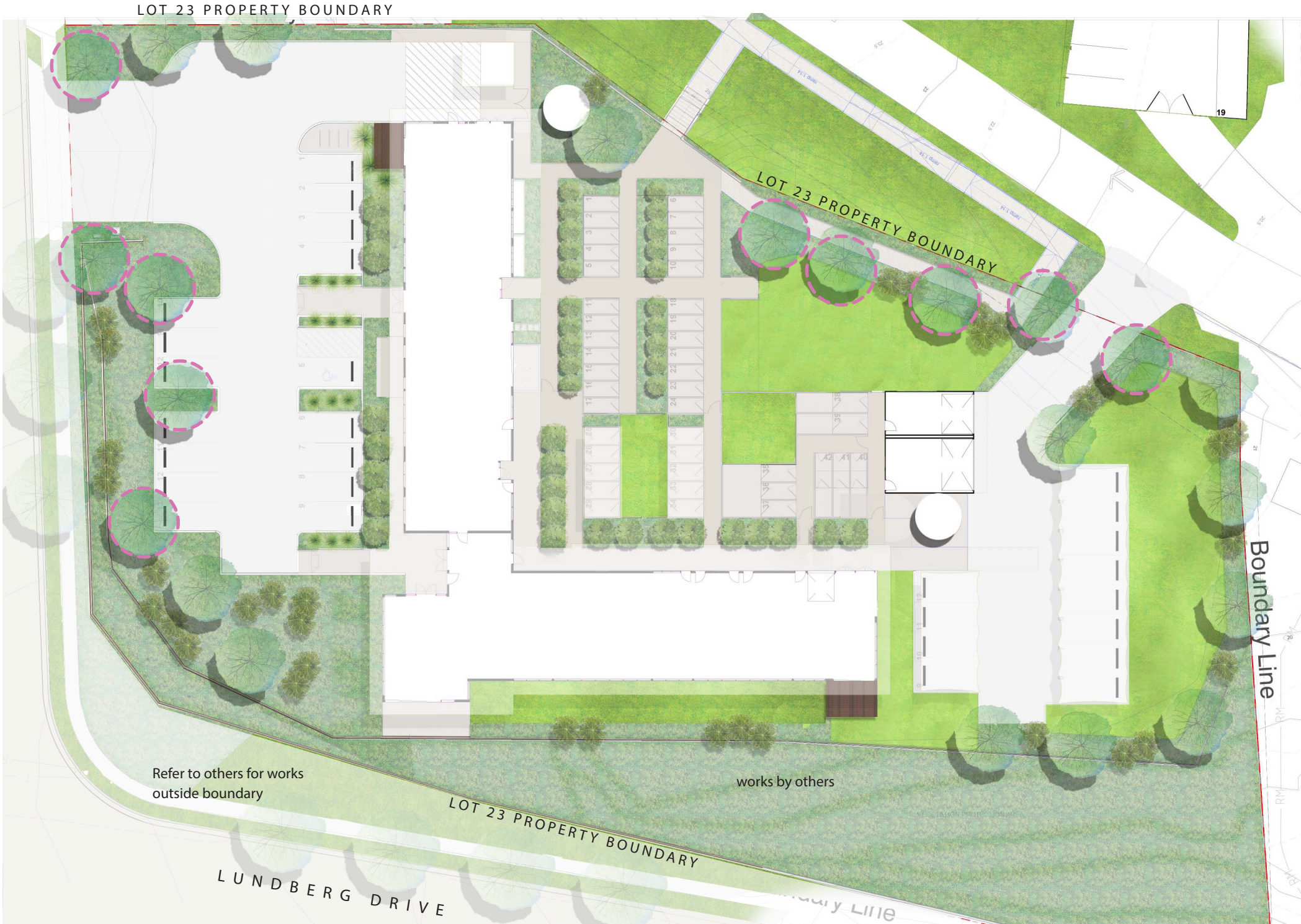


- LEGEND
- 1. Feature trees (planted as tubestock unless otherwise specified)
  - 2. Bitumen carpark
  - 3. Timber deck
  - 4. Concrete pavement
  - 5. Lawn (grass seeded)
  - 6. Screen planting
  - 7. Water storage
  - 10. Grass swale (by Engineer)
  - 11. Bike racks
  - 12. Ramped access
  - 13. Grass seeded embankment
  - 14. Buffer planting
  - 15. Shade trees

LANDSCAPE PLAN - GROUND FLOOR  
SCALE 1:200 @ A3

CONCEPT DESIGN	REVISION E	© LARC Landscape Architecture
Project: ANIMAL REHOMING FACILITY - South Murwillumbah		Date: 16/09/2022
Ref No.: 21561		Page: 7 / 12



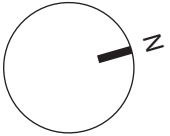


General planted areas 4-6 plants/m2 planted in a 70mm tubestock pot



45Ltr Waterhousia floribunda shade trees in select locations

45LTR TREE STOCK PLAN  
SCALE 1:250 @ A3



CONCEPT DESIGN	REVISION E	© LARC Landscape Architecture
Project: ANIMAL REHOMING FACILITY - South Murwillumbah		Date: 16/09/2022
Ref No.: 21561		Page: 8 / 12





ENTRY LANDSCAPE

The two vehicular entrances to the Animal Rehoming Facility are highlighted through the placement of feature trees. These trees are also located at the community pedestrian entrance and provide wayfinding cues.



ROBUST MATERIALS

The pavement at the entrances is durable and long lasting concrete. Organic bark mulch is used in the garden beds surrounding the carpark.

CONCEPT DESIGN	REVISION E	© LARC Landscape Architecture
Project: ANIMAL REHOMING FACILITY - South Murwillumbah		Date: 16/09/2022
Ref No.: 21561		Page: 9 / 12



NATIVE FEATURE TREES



WATERHOUSEA floribunda  
Weeping Lily Pili



CALLISTEMON viminalis  
Weeping Bottlebrush



CYATHEA cooperi Tree Fern



AGATHIS robusta Kauri Pine



ALLOCASUARINA littoralis  
Black She-Oak

NATIVE SCREENING SHRUBS



GREVILLEA Moonlight



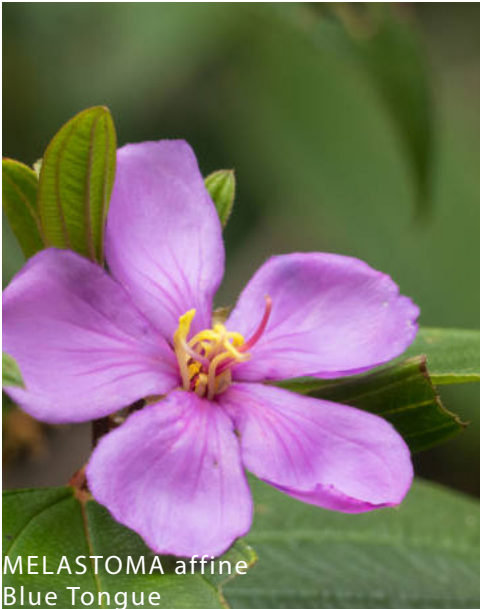
CORDYLINE pentolaris



SYZYGIUM spp



ASPLENium australasicum  
Birds Nest Fern



MELASTOMA affine  
Blue Tongue

NATIVE GROUNDCOVERS & GRASSES



BLECHNUM indicum Silver Fern



VIOLA hederacea Native Violet



LOMANDRA longifolia  
Mat Rush



THEMEDA triandra Kangaroo Grass



DIANELLA caerulea Flax Lily

CONCEPT DESIGN

REVISION E

© LARC Landscape Architecture

Project: ANIMAL REHOMING FACILITY - South Murwillumbah

Date: 16/09/2022

Ref No.: 21561

Page: 10 / 12



TOUGH HARDY SHRUBS, 50CM - 1.5M  
HIGH, TO PROVIDE COLOUR AND  
FLOWERS



SCAEVOLA Purple Fan Flower



KALANCHE silver spoons



CHRYSOCEPHALUM apiculatum



PENNISETUM nafray



GAURA butterfly bush



WESTRINGIA jervis gem



ANIGOZANTHUS kangaroo paw



BANKSIA serata



RHAPHEOLEPIS oriental pearl

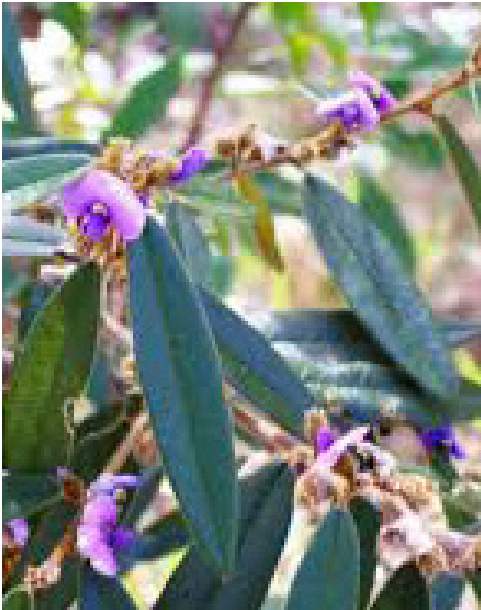


GREVILLEA sp.

LOW MAINTENANCE GROUNDCOVERS &  
CLIMBERS



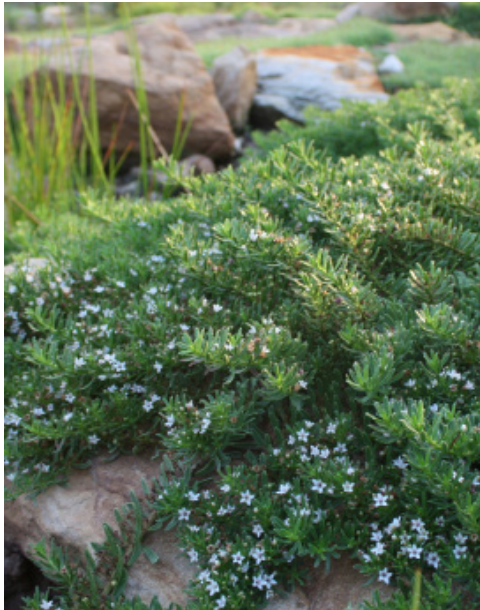
PANDOREA jasminoides Bower Plant



HARDENBERGIA violacea Happy Wanderer



CASUARINA cousin it



MYOPORUM parvifolium



APTINEA cordata

CONCEPT DESIGN

REVISION E

© LARC Landscape Architecture

Project: ANIMAL REHOMING FACILITY - South Murwillumbah

Date: 16/09/2022

Ref No.: 21561

Page: 11 / 12



We acknowledge the Yugara people of Mt Coot-tha, the Minjungbal people, the Widjabul people and The Turrbal people as the Traditional Owners of the lands on which we work and create. We also acknowledge the traditional custodians throughout Aboriginal and Torres Strait Islander lands. We recognise their ongoing connection to country, land and waters that were never ceded and pay our respects to Elders, past, present and future.



© LARC Landscape Architecture

BRISBANE	BYRON BAY	CONTACT
PO Box 188	1/6–10 Station St	Email: <a href="mailto:luke@larc.la">luke@larc.la</a>
New Farm QLD 4005	Bangalow NSW 2479	Call: +61 411 710 320